

GCSE Information & Revision Evening

Hobart High School
2025



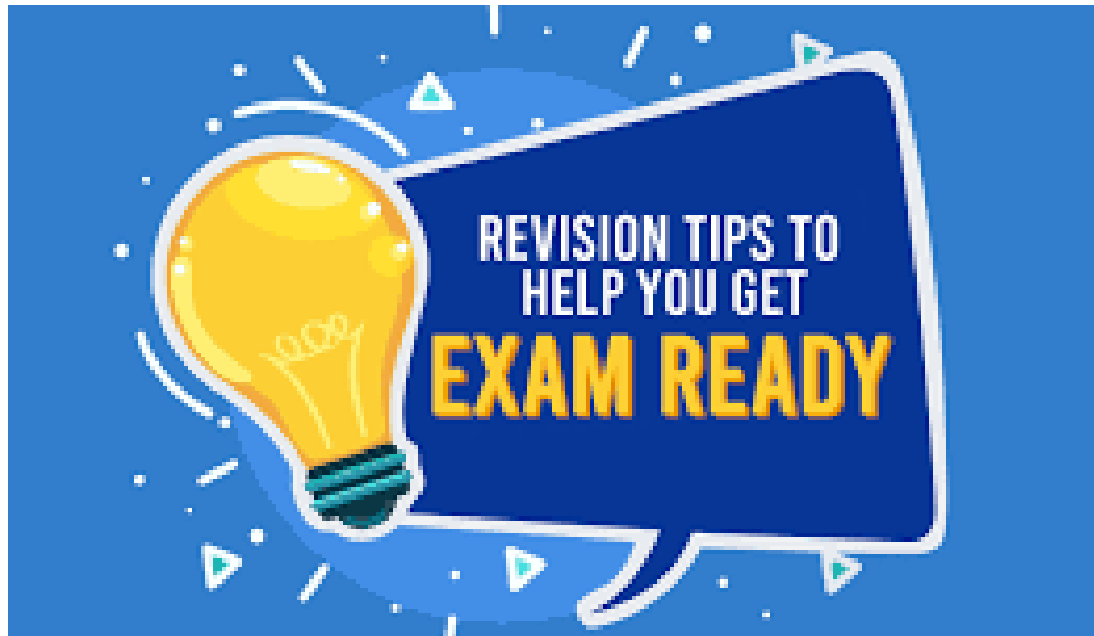
- 1). Revision
- 2). Top Tips
- 3). NEA & Practical Exams
- 4). GCSE Summer Exams
- 5). Support
- 6). End of Year arrangements



Getting Organised...

- Revision Folder
- Lesson notes
- Revision guides
- Subject specific information
- Black Pens & Pencils
- Scientific Calculator
- Clear pencil case
- Clear water bottle





Revision Timetable

- Making the most of your time is crucial-everyone is different
- Plan ahead
- Make the time you spend revising really count
- Draft a timetable on a weekly basis
- Include leisure time, stretch-breaks, meals, work, school
- Focus on the time you have do not worry about the time you do not have!

| MON | TUE | WED | THU |
|------------------------------|----------------------------------------|---------------------------------|------------------------------|
| 4:00pm MATHS - HISTOGRAMS | 4:00pm TECH- MATERIALS | 4:00pm MATHS - AREA & VOLUME | 4:00pm HISTORY - NAPOLEON |
| 4:30pm / | 4:30pm MATHS - CUMULATIVE FREQUENCY | 4:30pm / | 4:30pm MATHS - QUADRATICS |
| 5:00pm / | 5:00pm / | 5:00pm / | 5:00pm / |
| 5:30pm GEOG - POPULATION | 5:30pm / | 5:30pm GEOG - ECONOMY | 5:30pm / |
| 6:00pm / | 6:00pm GEOG - | 6:00pm / | 6:00pm GEOG - |

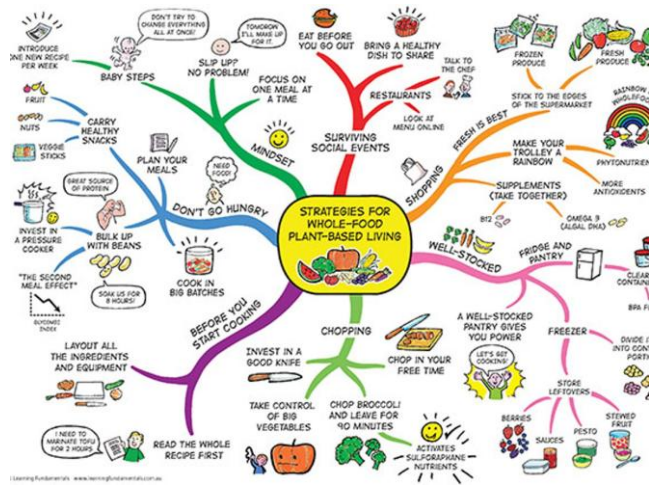
Effective Learning & Revision

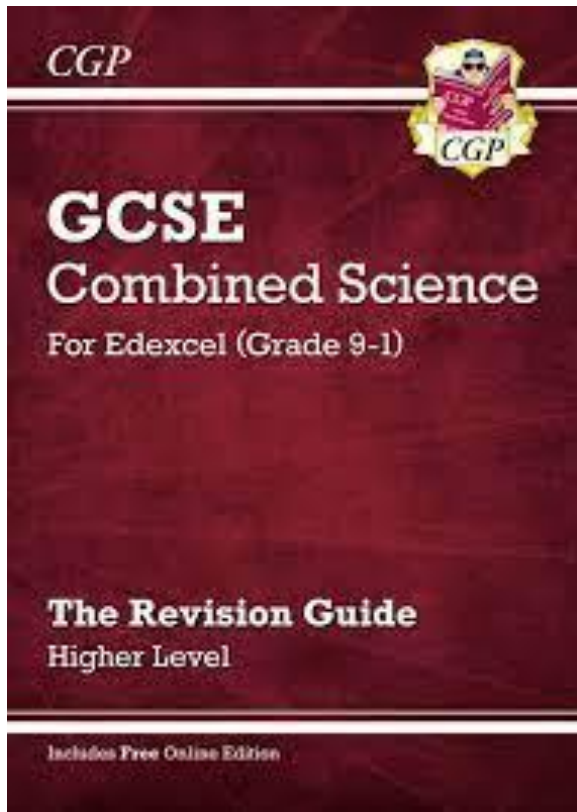
- Put your phone away
- Quiet Space – no music
- Each topic 15-30 mins max
- Change topic when the time is up
- Tick the topic of your list
- Spaced Practice
- REVIEW - remember to come back to each topic to review learning
- REWARD yourself!!



Revision...

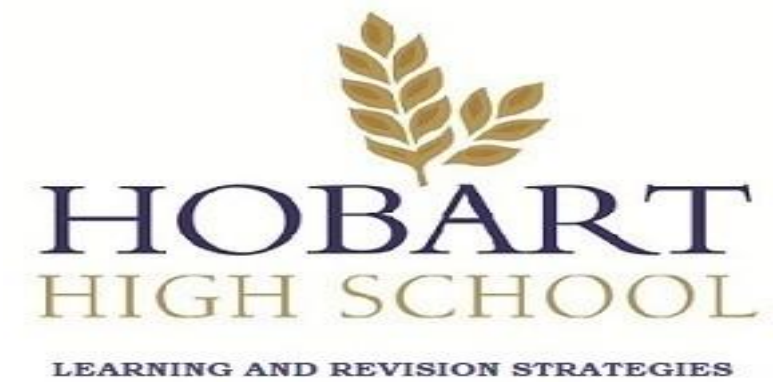
- Mind Maps
- Dual Coding
- Self - Quizzing
- Brain Dump
- Flash Cards
- Practice Papers





Revision Resources...

- GCSEPod
- SENECA
- Revision guides



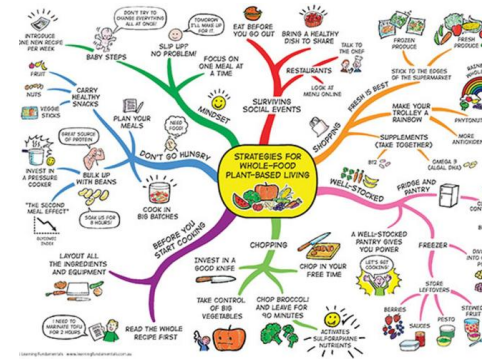
There's an app for that...

- **Exam Countdown:** Scheduling app to help with planning and key dates.
- **BBC Bitesize :** Flash Cards, quizzes & guides Covering the main GCSE topics.
- **Quizlet:** Revise using the 125m flashcard sets. Students can also create their own flashcards and use the timed functions to test and improve knowledge.

And LOADS more!



Intervention & Revision Sessions...



Some subjects will be running extra Intervention revision sessions at lunchtime, after school & during holidays

Keep an eye on your emails for more information!

Intervention & Revision Sessions

Whole School timetabled sessions are after school on rotation -email invitations

- Art – 13th February 3.15-4.30pm & Thursday Lunchtimes A1
- PE – 13th Feb 3.15pm -4.30pm & Lunchtimes see Posters/schedule
- Business - Friday 3.15-4.30pm
- Maths –EBR Thursday Lunchtimes
- Design & Technology – Lunchtime & after School sessions – see schedule

Dates
for your



IOBART
GH SCHOOL

Intervention & Revision Sessions

February Half Term Intervention

Monday

- English Literature 9-2pm

Tuesday

- Design & Technology 9-3pm
- Music 9.30-12.30pm

Wednesday

- English Language 9-2pm

Easter & May Half Term Intervention to follow!

Students will receive Invitations to these sessions- watch your emails!

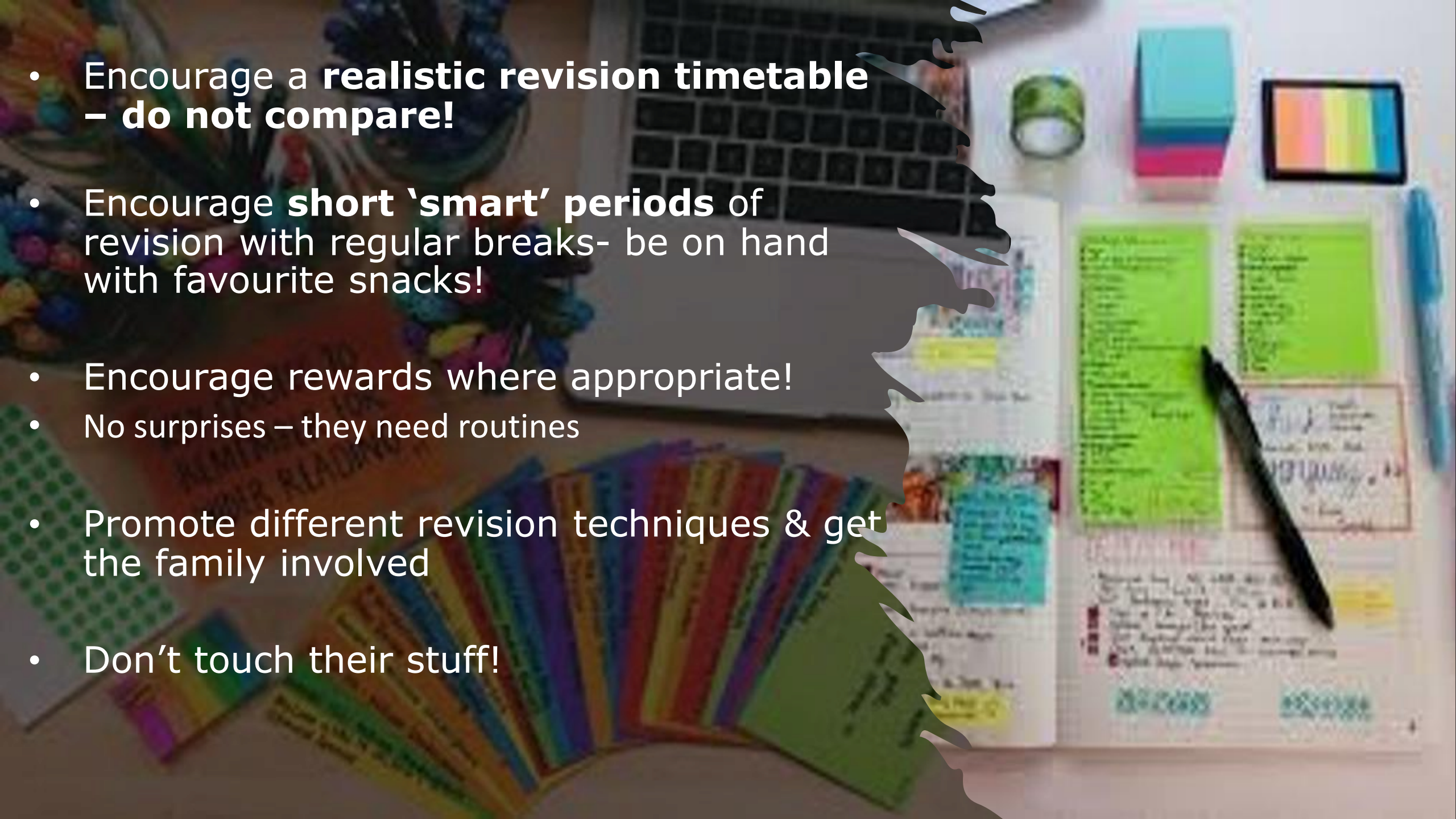


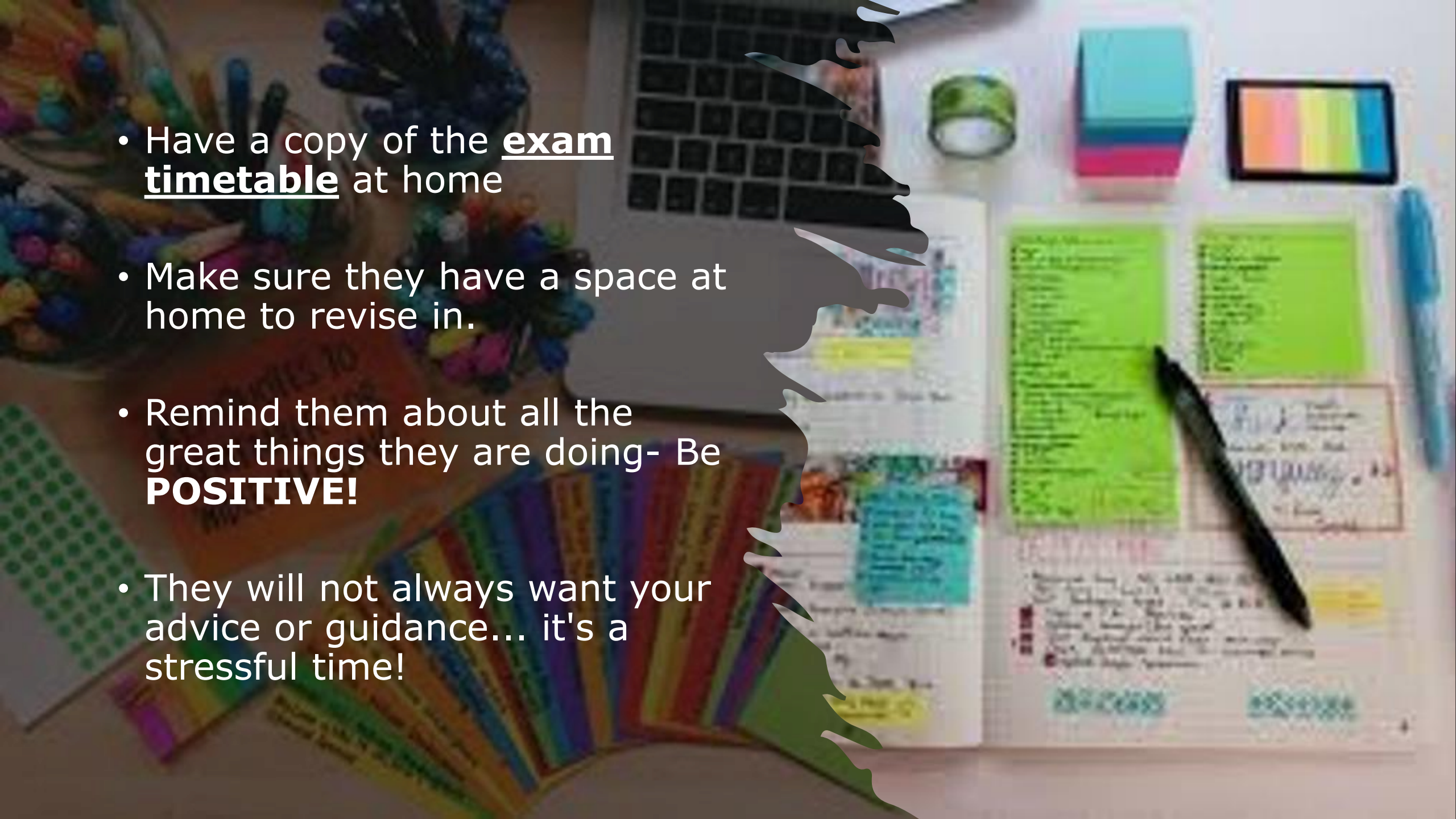
Top Tips for Parents...

Talk to your child about how **you** can best support **them**:

- Make a list of everything needed
- Find out what revision/intervention is on offer from school
- Identify and encourage appropriate revision websites/apps for each subject
- Sleep routines
- Breakfast & healthy eating

- Encourage a **realistic revision timetable** – **do not compare!**
- Encourage **short 'smart' periods** of revision with regular breaks- be on hand with favourite snacks!
- Encourage rewards where appropriate!
- No surprises – they need routines
- Promote different revision techniques & get the family involved
- Don't touch their stuff!



- 
- A top-down view of a desk with various school supplies. On the left, a container holds many colorful pens and pencils. A laptop is partially visible in the upper center. To the right, there's a stack of colorful sticky notes (blue, pink, yellow) and a small color calibration chart. In the foreground, a notebook is open, showing pages with handwritten notes and several bright green and yellow sticky notes attached. A black pen lies on the notebook. A fan of colorful index cards is visible at the bottom. A large, dark, jagged silhouette of a person's head and shoulders is overlaid on the right side of the image.
- Have a copy of the exam timetable at home
 - Make sure they have a space at home to revise in.
 - Remind them about all the great things they are doing- Be **POSITIVE!**
 - They will not always want your advice or guidance... it's a stressful time!

NEA & Practical Exams...

Physical Education GCSE

- Thursday 27th & Friday 28th February & 3rd March Practical Exam
- Monday 3rd March PEP Coursework Deadline
- Practical Moderation Day 18th March (tbc)

Drama

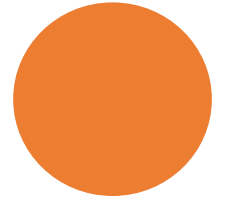
- NEA First Draft 13th Feb NEA Final Deadline Thursday 3rd March.
- Component 3 Practical Exam Thursday 27th March. Technical & Dress Rehearsal Wednesday 26th March.

Music

- Friday 21st March – Component 1 Performance
- Friday 28th March- Component 2 Composition

MFL

GCSE Speaking Exams Tuesday 29th & Wednesday 30th April (you will be told your day & time)



NEA & Practical Exams...

Art

- 24th & 25th April Art Exam
- 25th April Natural Forms Portfolio Coursework Deadline (60%) & Externally set task exam project (40%) Deadline
- Art Exhibition 17th June

Design & Technology

- 24th February NEA Practical Deadline
- 24th March NEA Portfolio Deadline

Food Preparation and Nutrition

NEA 1- Complete

NEA 2- Practical Monday 24th, Tuesday 25th & Wednesday 26th March (you will be told your day)



IOBART
GH SCHOOL

YEAR 11 SPRING MOCKS

| Monday 10 th March | Tuesday 11 th March | Wednesday 12 th March | Thursday 13 th March |
|--------------------------------------------------------------|------------------------------------------------------------------|-------------------------------------|-------------------------------------------------------------|
| 9am | 9am | 9am | 9am |
| English Language 1hr 45m | Maths (Calculator) 1hr 30m | Geography 1hr 45m | English Literature 2hr 15m |
| 1pm | 1pm | 1pm | 1pm |
| Biology 1hr 45m Combined Biology 1hr 15m | Chemistry 1hr 45m Combined Chemistry 1hr 15m | History 1hr 30m | Physics 1h 45m Combined Physics 1hr 15m |

Summer GCSE Exams...

8th May 2025 – 18 June 2025

You are expected to be in school and we will release a date for after May half term when students will just come in for exams. The official date students will be off role is **30th June**

Before this date:

- Students are expected to be in school as normal
- 8:40am – 3:15pm PROMPTLY!
- Monday - Friday

After this date:

- Students will only be required to come in for their exams
- There will be some additional revision sessions that they can attend (they will be invited too near the time)
- They will need to sign in & out at reception

If they need to use the school bus there will be provision in school for them to stay all day.



Exam Timetable...

8th May 2025 – 18th June 2025



| Date | Start | Board | Component Code | Length | Component Title |
|------------|-------|-------|----------------|--------|----------------------------------------|
| Mon 15 May | 13:00 | AQA | 8261/W | 01:45 | Drama Written Paper |
| Tue 16 May | 09:00 | AQA | 8461/1H | 01:45 | Biology Paper 1 Tier H |
| Tue 16 May | 09:00 | AQA | 8461/1F | 01:45 | Biology Paper 1 Tier F |
| Tue 16 May | 09:00 | AQA | 8464/B/1H | 01:15 | Combined Sci Trilogy Biology P1H |
| Tue 16 May | 09:00 | AQA | 8464/B/1F | 01:15 | Combined Sci Trilogy Biology P1F |
| Tue 16 May | 13:00 | AQA | 8668/LF | 00:35 | German Listening Test Tier F |
| Tue 16 May | 13:00 | AQA | 8668/RF | 00:45 | German Reading Test Tier F |
| Tue 16 May | 13:00 | AQA | 8668/LH | 00:45 | German Listening Test Tier H |
| Tue 16 May | 13:00 | AQA | 8668/RH | 01:00 | German Reading Test Tier H |
| Wed 17 May | 09:00 | AQA | 8702/1 | 01:45 | English Literature Paper 1 |
| Wed 17 May | 13:00 | EDEXL | 1PE0 01 | 01:30 | PE Fitness and Body Systems |
| Thu 18 May | 09:00 | EDEXL | 1H10 11 | 01:15 | History Medicine in Britain |
| Thu 18 May | 13:00 | EDEXL | 1B50 01 | 01:45 | Bus Investigating Small Bus. |
| Fri 19 May | 09:00 | AQA | 8300/1F | 01:30 | Mathematics Paper 1 Tier F |
| Fri 19 May | 09:00 | AQA | 8300/1H | 01:30 | Mathematics Paper 1 Tier H |
| Fri 19 May | 13:00 | EDEXL | 1CP2 01 | 01:30 | CS Principles of Comp.Sci. |
| Mon 22 May | 09:00 | AQA | 8462/1H | 01:45 | Chemistry Paper 1 Tier H |
| Mon 22 May | 09:00 | AQA | 8462/1F | 01:45 | Chemistry Paper 1 Tier F |
| Mon 22 May | 09:00 | AQA | 8464/C/1H | 01:15 | Combined Sci Trilogy Chemistry P1H |
| Mon 22 May | 09:00 | AQA | 8464/C/1F | 01:15 | Combined Sci Trilogy Chemistry P1F |
| Mon 22 May | 13:00 | OCR | J383/01 | 01:00 | Geog A [Geog Thm] : Lvng in UK Tdy Wtn |
| Tue 23 May | 09:00 | AQA | 8658/LF | 00:35 | French Listening Test Tier F |
| Tue 23 May | 09:00 | AQA | 8658/RF | 00:45 | French Reading Test Tier F |
| Tue 23 May | 09:00 | AQA | 8658/LH | 00:45 | French Listening Test Tier H |
| Tue 23 May | 09:00 | AQA | 8658/RH | 01:00 | French Reading Test Tier H |
| Wed 24 May | 09:00 | AQA | 8702/2 | 02:15 | Eng Lit Paper 2 |
| Thu 25 May | 09:00 | AQA | 8463/1H | 01:45 | Physics Paper 1 Tier H |
| Thu 25 May | 09:00 | AQA | 8463/1F | 01:45 | Physics Paper 1 Tier F |
| Thu 25 May | 09:00 | AQA | 8464/P/1H | 01:15 | Combined Sci Trilogy Physics P1H |
| Thu 25 May | 09:00 | AQA | 8464/P/1F | 01:15 | Combined Sci Trilogy Physics P1F |
| Thu 25 May | 13:00 | EDEXL | 1CP2 02 | 02:00 | CS Application Comp.Thinking |
| Fri 26 May | 09:00 | AQA | 8668/WF | 01:00 | German Writing Test Tier F |
| Fri 26 May | 09:00 | AQA | 8668/WH | 01:15 | German Writing Test Tier H |

You will soon be given a copy of your Summer 2025 GCSE Exam timetable & Statement of Entry

You **MUST**:

- Check you have been entered for the correct exams
 - Foundation/Higher
 - Correct modules
- Check your name and date of birth is correct

Any concerns speak with your subject teacher or Mrs Bromley!


Missed Exam...

- If you are ill the morning of your exam:
 - Contact the school immediately
 - Speak to Mrs Bromley or Dr Wharton
 - Try to come in for the exam
 - Separate room
 - Scribe
- If you are genuinely unable, we require medical evidence from a medical professional
 - Doctors letter
 - JCQ Self Certification form



Warning to candidates



| | | | | | |
|------------------------------------------------------------------------------------------|-----------------------------------------------------------------------------------------------------|---------------------------------------------------------------------------------------------|--------------------------------------------------------------------------------------------|------------------------------------------------------------------------------------------------|---------------------------------------------------------------------------------------------|
|  AQA |  City & Guilds |  CCEA |  OCR |  Pearson |  WJEC |
|------------------------------------------------------------------------------------------|-----------------------------------------------------------------------------------------------------|---------------------------------------------------------------------------------------------|--------------------------------------------------------------------------------------------|------------------------------------------------------------------------------------------------|---------------------------------------------------------------------------------------------|



1

You **must** be on time for all your examinations.

2

Possession of a mobile phone or other unauthorised material **is not allowed** even if you do not intend to use it. You will be subject to penalty and possible disqualification from the exam/qualification.

3

You **must not** talk to, attempt to communicate with or disturb other candidates once you have entered the examination room.

4

You **must** follow the instructions of the invigilator.

5

You **must not** sit an examination in the name of another candidate.

6

You **must not** become involved in any unfair or dishonest practice in any part of the examination.

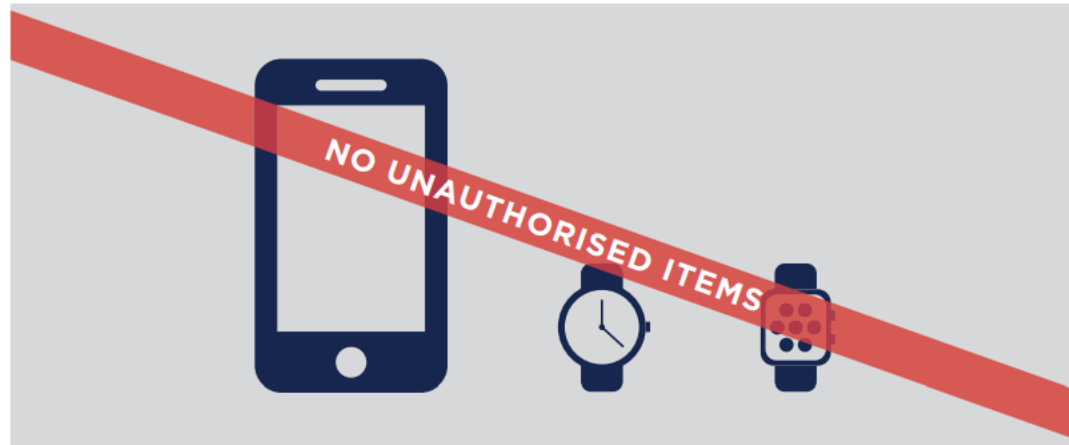
7

If you are confused about anything, only speak to an invigilator.

The Warning to candidates must be displayed in a prominent place outside each examination room. This may be a hard copy A3 paper version or an image of the poster projected onto a wall or screen for all candidates to see.

NO MOBILE PHONES NO WATCHES

**NO POTENTIAL TECHNOLOGICAL/WEB
ENABLED SOURCES OF INFORMATION**



Possession of unauthorised items, such as a mobile phone
or any watch, is a serious offence and could result in

DISQUALIFICATION

from your examination and your overall qualification.

Available support...

School contact number: 01508 520359

In School:

- Form Tutor
- Classroom Teacher
- Mrs Armitage (Pastoral Assistant) marmitage@hobart.org.uk
- Dr Wharton (Head of Year 11) nwharton@hobart.org.uk
- Mrs Wilkinson (Assistant Head teacher) jwilkinson@hobart.org.uk
- Mrs Bromley (exam office) cbromley@hobart.org.uk
- Mrs McLoughlin (Attendance office) pmcloughlin@hobart.org.uk



Available support...

External Support:

- **Beacon East- Careers Advice and Support**
- **SEMH Team**
- **Schools Mental Health Team**
- **Point 1 – Mental Health Support**
- **In School counsellor**
- **MAP – Self referral**
- **GP / Mental Health Nurse**
- **Chat Health**
- **Kooth**
- **Just One Norfolk**



Leavers' Hoodies 25

Price **£22.50**

Available to order via Screens Website closing date is **21st March**

- Select your colour
- Select your size
- Enter your name/nickname

You can order more than one hoody

All hoodies will be delivered to school after Easter half term



IOBARTON
GH SCHOOL

Leavers' Day...

Friday 27th June

- Smart, Casual clothing
- Buffet
- Formal Assembly & Presentations
- Alternative assembly

Any photo's for the memories assembly/alternative assembly
please email to Dr Wharton

nwharton@hobart.org.uk



Passport to prom...

- Hobart students can earn money towards the cost of their Leavers' Ball ticket:
- After school revision/intervention sessions
- Lunch time revision/intervention sessions
- Holiday revision/intervention sessions
- Independent revision/engagement with homework
- Use of GCSE Pod/SENECA
- Fundraising activities/involvement in the school community
- We will also take into account the number of positive points students have achieved on Go4schools.





Leavers' Ball 2025

Thursday 10th July
Dunston Hall
6:30pm – 11pm

Tickets will be purchased via WisePay and collected on Leavers' Day or via collection from reception.

Fundraising...

Leavers' Ball 2025

- Fundraising
- We need Easter Eggs for the Easter Raffle
- Raffle Prizes for Shrek next week and biscuit and cakes to sell for refreshments
- Prizes for Bingo





GCSE Result's Day 2025...

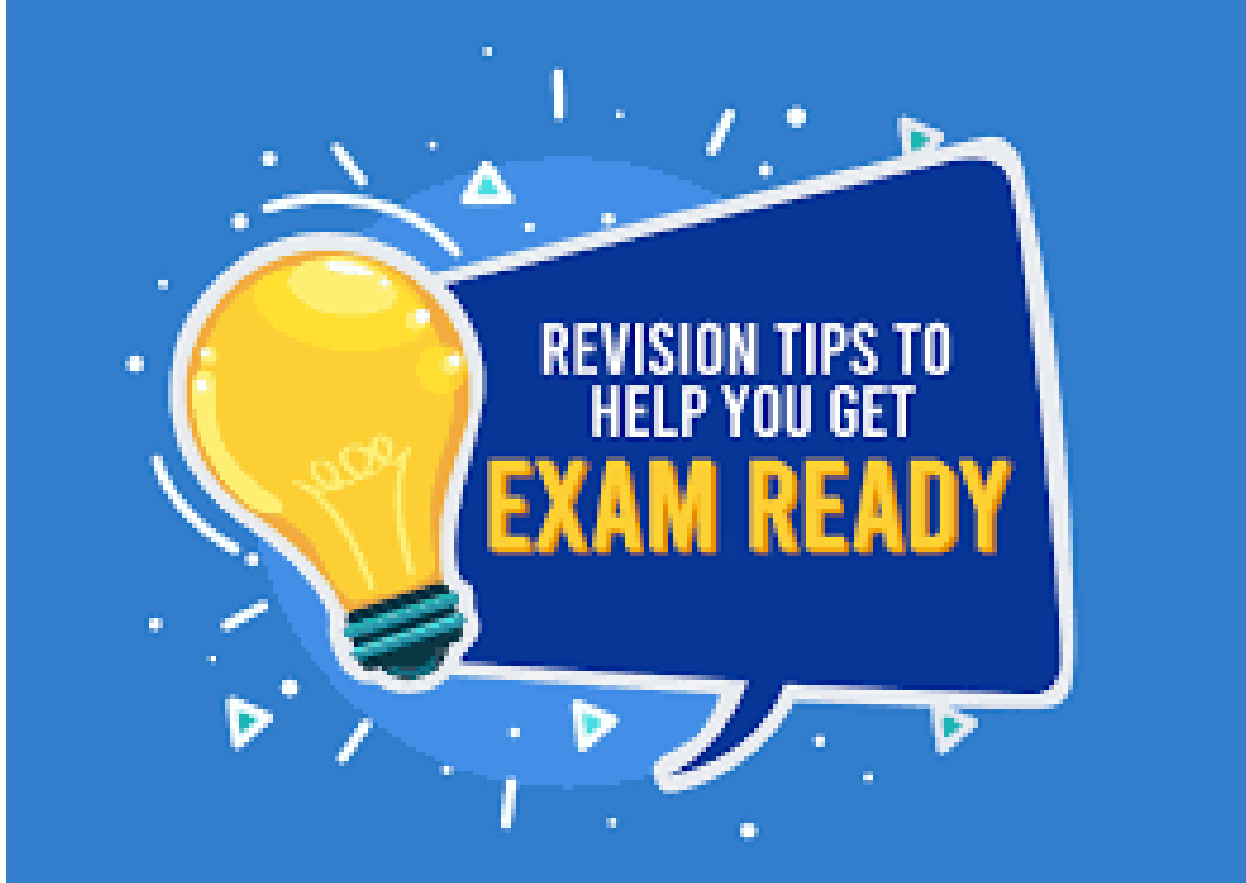
Thursday 21st August 2025

School will be open from 9am-11am to collect your results from the main hall.

If you are unable to collect your results and wish somebody else to:

A written letter/email giving permission with a signature

Alternatively, they will go in the post and you will receive them over the next few days! Remember to inform us if you change address!



**I won't count the days
I will make the days count!**