



Meet the SEND Team

Introduction

Hello!

My name is Mrs Hill. I am the SENCo at Hobart High School. It is my job to make sure that children with special educational needs or disabilities in school are supported. I am an English teacher but sometimes I teach other subjects too.



Hopefully you have received and read Mrs Holmes' First two transition newsletters. Over the next few weeks you will receive more of these. They will have lots of information and ideas about our school for you. You will learn more about:

- Our school
- What a typical day might look like for you
- The subjects you will be doing
- Food!
- Our uniform and the equipment you will need in school
- Getting to school (and home again!)
- What to do if you feel ill or hurt yourself in school
- Advice from our Year 7

Our school, like yours, isn't working normally because of the Coronavirus. This means you are not able to visit our school just yet. In this leaflet though, you can meet our team. You can also learn about some of the things we do.



I have read Year 6 Transition Newsletter: Number 1

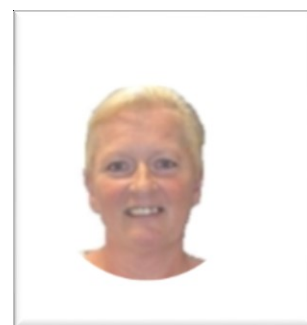
The SEND Office

In The SEND office is upstairs. It is at the end of the Maths corridor. It is where the Maths classrooms end and the English classrooms begin. You will usually find 3 people:

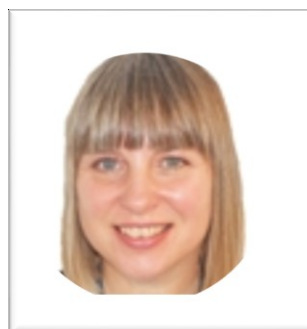
Me. **Mrs Hill**. You can come and find me in the office if you have any problems relating to your school work. Sometimes your tutor, Mrs Holmes or your parents will let me know if you need me.



Mrs Taylor is our Senior Teaching Assistant. You might see Mrs Taylor supporting in lessons. She also delivers our Curriculum Access intervention and organises Access Arrangements for those children who need help in their exams.



Mrs Milroy. Mrs Milroy is the SEN Admin assistant. Mrs Milroy doesn't support in the classroom but she may be the first person you see in the office or the first person your parents speak to when they call.



We work together to make sure that the right support is in place for those children who need it. You and your parents can speak to either one of us if you have a concern



I know who I can go to if I have a problem relating to my Special Educational Need.

The rest of the team

Mrs Jespersen

Mrs Jespersen is our Lead TA. You might see her supporting in some of your lessons. She delivers a range of interventions including Literacy Catch-up, Sound Discovery and Social Communication. She also acts as a student mentor and supports our lunch time Games and Library clubs.



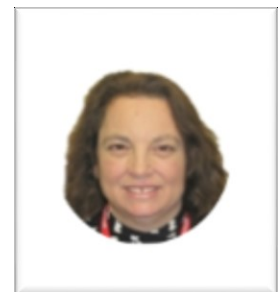
Mrs Fisher

You might see Mrs Fisher supporting in some of your lessons. She delivers our Social Communication interventions and other 1-2-1 interventions. She also acts as a student mentor.



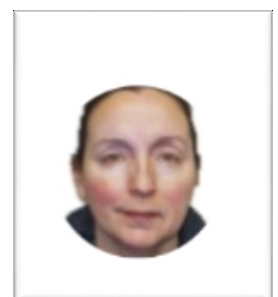
Mrs Hughes

You might see Mrs Hughes supporting in some of your lessons. She delivers our Curriculum Access, Sound Discovery and Literacy Catch-up interventions. She also leads the Lexia intervention, supports our lunchtime Games Club and acts as a student mentor.



Mrs Jackman

You might see Mrs Jackman supporting in some of your lessons. She delivers a range of literacy and numeracy interventions including Catch-up, Sound Discovery and Stareway to spelling. She also acts as a student mentor and supports out lunch time Hideaway Club.



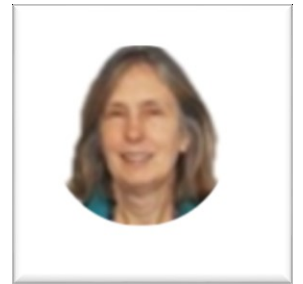
Mrs Pincott

You might see Mrs Pincott supporting in some of your Maths and Science lessons. She delivers Numeracy Catch-up and acts as a student mentor. She also supports our lunch time Games Club and collects netbooks from children who use them in lessons at the end of the school day.



Mrs Knight

You might see Mrs Knight supporting in some of your English, History and Geography lessons. She also distributes netbooks to children who use them in lessons at the start of the school day.



Miss Jamison

Miss Jamison is mostly based in the classroom so this is where you are most likely to find her. She works across all year groups in all subjects.



Miss Tanner

Miss Tanner is mostly based in the classroom so this is where you are most likely to find her. She works across all year groups in all subjects.

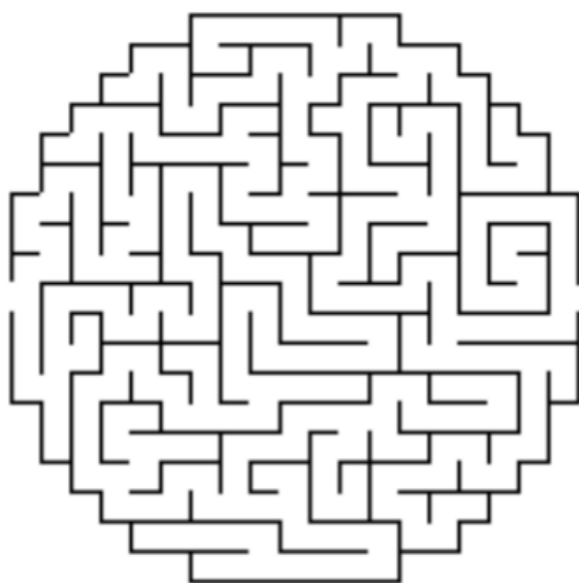


I know some of the adults that may be working with me in September

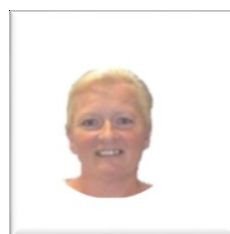
Test your knowledge

1. Find our way through the maze to the SEN Office

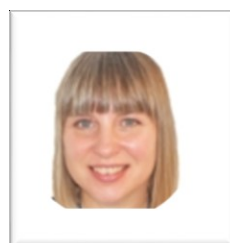
You are here



Mrs



Mrs



Mrs

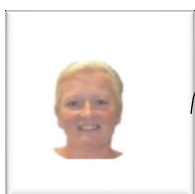
2. Do you know...

a) the names of the 3 people you will find there?

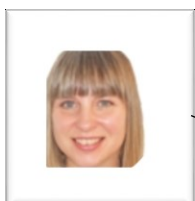
b) what their jobs are?



Senior Teaching Assistant



Admin Assistant



Senco

3. Can you find the SEND team in the wordsearch below?

W	J	K	W	O	J	K	G	M	K	B	N	N	Y	N
P	E	N	N	B	P	I	J	X	E	P	V	P	A	M
Y	Z	K	U	I	G	O	T	H	W	O	I	M	F	I
H	C	N	V	K	K	T	V	O	U	N	K	I	O	L
N	E	S	R	E	P	S	E	J	C	C	S	Z	P	R
I	Z	L	F	Y	J	E	E	O	A	H	K	I	K	O
N	K	R	U	P	A	R	T	J	E	H	S	M	H	Y
K	W	Z	L	C	M	T	N	R	H	U	G	H	E	S
K	N	L	Y	R	I	P	Z	Z	M	T	V	M	C	Q
A	I	I	L	C	S	F	U	O	A	N	U	T	B	I
H	W	H	G	K	O	L	X	N	B	P	V	M	M	A
O	P	R	H	H	N	J	N	H	T	A	Y	L	O	R
J	Z	I	S	K	T	E	K	V	A	D	E	S	A	M
N	U	O	T	E	R	N	P	F	H	Z	H	M	T	Y
I	M	T	Q	S	J	J	C	L	A	W	I	X	P	S

FISHER



JACKMAN



MILROY



KNIGHT



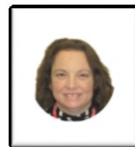
HILL



JAMISON



HUGHES



PINCOTT



TANNER

JESPERSEN



TAYLOR



4. Can you work out this message from the SEND team?

A	B	C	D	E	F	G	H	I	J	K	L	M	N	O	P	Q	R	S	T	U	V	W	X	Y	Z
							15											13				20			

[illegible]

We look forward to meeting you when you join us.

In the meantime, If you or your families have any questions following this or any of Mrs Holmes' newsletters, please do not hesitate to contact a member of the SEND team through the Main Office

