



Our visual guide to
Finding your way around Hobart



Note to parents

This guide was created to support your child with the process of transition that would normally occur.

Obviously our school and our school day, look very different at the moment and may look different still in September. Some of you though, have been asking that we start to share some information with your children.

This booklet then, like Mrs Holmes' second newsletter, is designed to help you begin a dialogue with your child about what coming to Hobart may look like. It may be an opportunity to discuss which things may stay the same.

I hope that you find it useful. Please do not hesitate to contact me if you have any questions and I will do my best to answer them for you.

Mrs Hill

Arriving at Hobart

There are lots of ways to get to Hobart



☐ by **bus**



☐ by **car**



☐ on **foot**



☐ by **bike**

☐ I have arrived at Hobart 😊

Morning routine at Hobart

Do you have a phone or your PE kit?



☐ **Reception**

If you have a phone, you must hand it in at reception. They will keep it safe for you until the end of the day.

Your PE kit is heavy and you might not want to carry it around all day. You can put it in your locker. You can also keep your packed lunch in your locker.

If you have kept your essential equipment or reading book in your locker overnight, don't forget to put it in your bag.

☐ **I am ready for the school day** 😊



☐ Hand in your **phone** if you have one



☐ Put your **PE kit** and **lunch** in your locker



☐ Get any **books** and **essential equipment** out of your locker

Essential equipment

- ☐ Pen
- ☐ Pencil
- ☐ Rubber
- ☐ Pencil sharpener
- ☐ Ruler
- ☐ Compass
- ☐ Protractor
- ☐ Calculator (you can buy the recommended one from school)
- ☐ Coloured pencils
- ☐ Coloured highlighters
- ☐ Glue stick



☐ I have my essential equipment 😊

The reception area

There are a number of important places you can access at the reception area.



- ☐ The **school canteen**.
This is where you will get your lunch.



- ☐ The school **hall**.
This is where you will have year group assemblies and some PE lessons.



- ☐ The **Medical Room**.
Report to the reception desk if you feel unwell.



- ☐ The **pastoral Office**.
This is where you go if you are worried about anything.

☐ I have been to the reception area



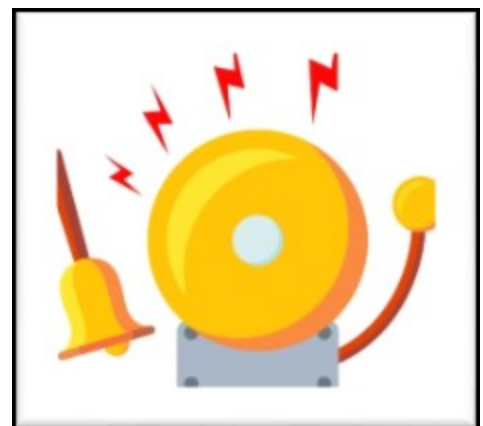
The School Day

You will have a timetable which will look something like this. It will tell you which subject you are doing, when, the room you need to be in and the name of your teacher. Don't worry about finding your way around - there will always be lots of you heading for the same room. The timetable runs over two weeks, and each week will be different

Diagram illustrating a school timetable grid. The grid is labeled with "Your teacher" (pointing to the first column), "Your class and subject" (pointing to the first row), and "Your room" (pointing to the first column). The grid shows a schedule of lessons over two weeks, with columns for lessons and rows for classes. The first row is highlighted in yellow.

Lesson	Class	Subject	Room	Teacher
1	1A	Maths	1A	Mr. Smith
2	1A	Science	1A	Ms. Jones
3	1A	History	1A	Mr. Brown
4	1A	PE	1A	Mr. Green
5	1A	Art	1A	Ms. White
6	1A	Music	1A	Mr. Black
7	1A	English	1A	Ms. Grey
8	1A	Maths	1A	Mr. Blue
9	1A	Science	1A	Ms. Red
10	1A	History	1A	Mr. Yellow
11	1A	PE	1A	Ms. Purple
12	1A	Art	1A	Mr. Pink
13	1A	Music	1A	Ms. Brown
14	1A	English	1A	Mr. Green
15	1A	Maths	1A	Ms. White
16	1A	Science	1A	Mr. Black
17	1A	History	1A	Ms. Grey
18	1A	PE	1A	Mr. Blue
19	1A	Art	1A	Ms. Red
20	1A	Music	1A	Mr. Yellow
21	1A	English	1A	Ms. Purple
22	1A	Maths	1A	Mr. Pink
23	1A	Science	1A	Ms. Brown
24	1A	History	1A	Mr. Green
25	1A	PE	1A	Ms. White
26	1A	Art	1A	Mr. Black
27	1A	Music	1A	Ms. Grey
28	1A	English	1A	Mr. Blue
29	1A	Maths	1A	Ms. Red
30	1A	Science	1A	Mr. Yellow
31	1A	History	1A	Ms. Purple
32	1A	PE	1A	Mr. Pink
33	1A	Art	1A	Ms. Brown
34	1A	Music	1A	Mr. Green
35	1A	English	1A	Ms. White
36	1A	Maths	1A	Mr. Black
37	1A	Science	1A	Ms. Grey
38	1A	History	1A	Mr. Blue
39	1A	PE	1A	Ms. Red
40	1A	Art	1A	Mr. Yellow
41	1A	Music	1A	Ms. Purple
42	1A	English	1A	Mr. Pink
43	1A	Maths	1A	Ms. Brown
44	1A	Science	1A	Mr. Green
45	1A	History	1A	Ms. White
46	1A	PE	1A	Mr. Black
47	1A	Art	1A	Ms. Grey
48	1A	Music	1A	Mr. Blue
49	1A	English	1A	Ms. Red
50	1A	Maths	1A	Mr. Yellow
51	1A	Science	1A	Ms. Purple
52	1A	History	1A	Mr. Pink
53	1A	PE	1A	Ms. Brown
54	1A	Art	1A	Mr. Green
55	1A	Music	1A	Ms. White
56	1A	English	1A	Mr. Black
57	1A	Maths	1A	Ms. Grey
58	1A	Science	1A	Mr. Blue
59	1A	History	1A	Ms. Red
60	1A	PE	1A	Mr. Yellow
61	1A	Art	1A	Ms. Purple
62	1A	Music	1A	Mr. Pink
63	1A	English	1A	Ms. Brown
64	1A	Maths	1A	Mr. Green
65	1A	Science	1A	Ms. White
66	1A	History	1A	Mr. Black
67	1A	PE	1A	Ms. Grey
68	1A	Art	1A	Mr. Blue
69	1A	Music	1A	Ms. Red
70	1A	English	1A	Mr. Yellow
71	1A	Maths	1A	Ms. Purple
72	1A	Science	1A	Mr. Pink
73	1A	History	1A	Ms. Brown
74	1A	PE	1A	Mr. Green
75	1A	Art	1A	Ms. White
76	1A	Music	1A	Mr. Black
77	1A	English	1A	Ms. Grey
78	1A	Maths	1A	Mr. Blue
79	1A	Science	1A	Ms. Red
80	1A	History	1A	Mr. Yellow
81	1A	PE	1A	Ms. Purple
82	1A	Art	1A	Mr. Pink
83	1A	Music	1A	Ms. Brown
84	1A	English	1A	Mr. Green
85	1A	Maths	1A	Ms. White
86	1A	Science	1A	Mr. Black
87	1A	History	1A	Ms. Grey
88	1A	PE	1A	Mr. Blue
89	1A	Art	1A	Ms. Red
90	1A	Music	1A	Mr. Yellow
91	1A	English	1A	Ms. Purple
92	1A	Maths	1A	Mr. Pink
93	1A	Science	1A	Ms. Brown
94	1A	History	1A	Mr. Green
95	1A	PE	1A	Ms. White
96	1A	Art	1A	Mr. Black
97	1A	Music	1A	Ms. Grey
98	1A	English	1A	Mr. Blue
99	1A	Maths	1A	Ms. Red
100	1A	Science	1A	Mr. Yellow

The day is split differently than you may be used to. Bells will ring at the end of every lesson, registration, break and lunch to warn you to get to your next lesson on time. If you are on the field you will need to listen out carefully for the whistle. Remember, it can take a few minutes to get to your room so leave plenty of time.



The corridors can get busy between lessons and at lunch. This is ok. We all walk on the left so that we don't bump into each other.



☐ I have walked around the school



Break and lunch



At break and lunch, you can bring your own food. You can bring a water bottle and fill it up at the fountain. We also have places you can buy food and drink.

You pay for your food by scanning your finger print. You can put money into a machine on site. It is better if your parents or carers can top money up using wise pay.

At lunch you can choose where you eat. If you bring your own food, you can still eat with your friends who want to buy something to eat.

You can also come to Games Club or Hideaway Club if you want somewhere a little quieter to eat your lunch.

There are lots of clubs you can join at lunch and after school/ School clubs are a great place to make new friends and learn new skills.

.

Going home

Do you have a phone or need to take your PE kit home?



☐ Get your **PE kit** and **lunch bag** or **box** out of your



☐ Leave any **books** and **essential equipment** you don't need.

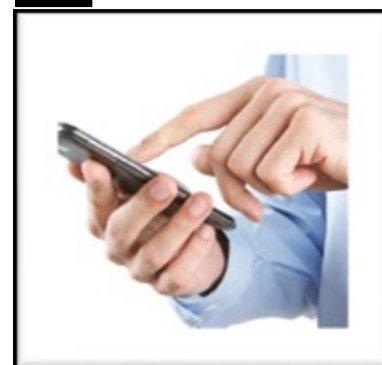
If you have a phone, you must hand it in at reception. They will keep it safe for you until the end of the day.

Your PE kit is heavy and you might not want to carry it around all day. You can put it in your locker. You can also keep your packed lunch in your locker.

If you have kept your essential equipment or reading book in your locker overnight, don't forget to put it in your bag.



☐ **Reception**

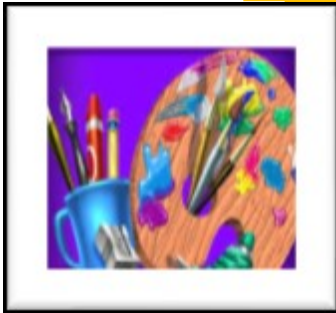


☐ Collect your **phone** if you had

☐ I have had a successful day in school



Subject areas to look out for



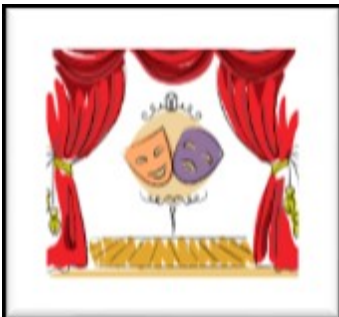
☐ Art



☐ Food



☐ History



☐ Drama



☐ MFL



☐ ICT



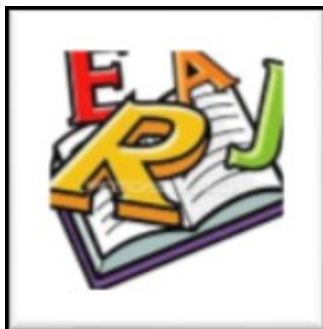
☐ DT



☐ Geography



☐ Maths



☐ English



☐ Graphics



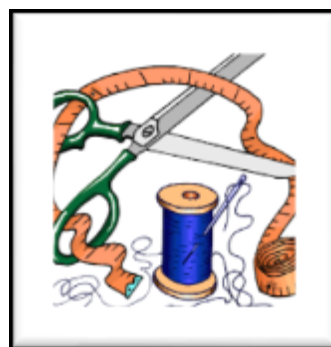
☐ Music



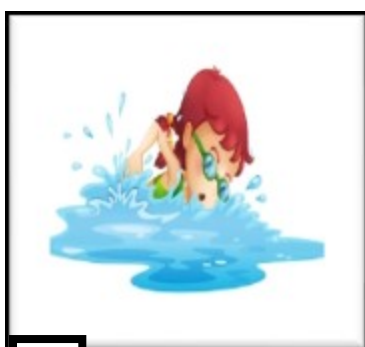
☐ RE



☐ Science



☐ Textiles



☐ PE



You may see some of these areas in the video or newsletters sent out by Mrs Holmes!

☐ I have seen all of the subject areas



My name is: _____

I like to be called: _____

Things I like: _____

Things I don't like: _____

If I need help please take me to reception

Or

Help me to get to my next lesson.

